

---

SHC,

# User Guide

---

## GIANT Tool Ver 1.2



| www.sam4s.com |

**[www.sam4s.com](http://www.sam4s.com)**

## CONTENTS

<b>1. INTRODUCTION.....</b>	<b>3</b>
<b>2. SUPPORT DEVICE &amp; INTERFACE.....</b>	<b>3</b>
<b>3. USER INTERFACE.....</b>	<b>4</b>
1) DEVICE CONFIGURATION DIALOG.....	4
2) FUNCTION SELECT DIALOG.....	5
3) NV LOGO DOWNLOAD DIALOG.....	5
4) USER SETUP DIALOG.....	6
5) FIRMWARE DOWNLOAD DIALOG.....	6
6) NETWORK SETTING DIALOG (ETHERNET-II INTERFACE).....	7
7) WI-FI NETWORK SETTING DIALOG (WI-FI INTERFACE).....	8
<b>3. DESCRIPTION OF EACH FUNCTIONS.....</b>	<b>9</b>
1) LOGO DOWNLOAD.....	9
2) USER SETUP.....	13
(1) Description of User Setup Options.....	14
(2) New Option.....	18
3) FIRMWARE DOWNLOAD.....	19
(1) GIANT-100.....	19
4) NETWORK SETTING DIALOG (ETHERNET-II INTERFACE).....	20
(1) Ethernet-II Network Dialog.....	20
(2) Ethernet-II Network Setting Dialog.....	21
5) NETWORK SETTING DIALOG (WI-FI INTERFACE).....	23
(1) Wi-Fi Network Dialog.....	23
(2) Glossary of Terms.....	24
(3) Install a Virtual COM Driver (Windows XP, POSReady 2009).....	25
(4) Install a Virtual COM Driver (Windows 7, POSReady 7).....	27
(5) Infrastructure mode setting.....	28
(6) Limited AP setting.....	31
(7) Print Test page (Windows XP, POSReady 2009).....	33
(8) Print Test page (Windows 7, POSReady 7).....	36
(9) WLAN Tips.....	39

## 1. INTRODUCTION

It is integrated software for POS Printer GIANT series and it includes the all of the necessary utility for our printer product. If you want to other resource for our printer example windows driver, OPOS driver and other interface driver, please visit our web site.

## 2. SUPPORT DEVICE & INTERFACE

### DEVICES

- GIANT-100

### FUNCTIONS

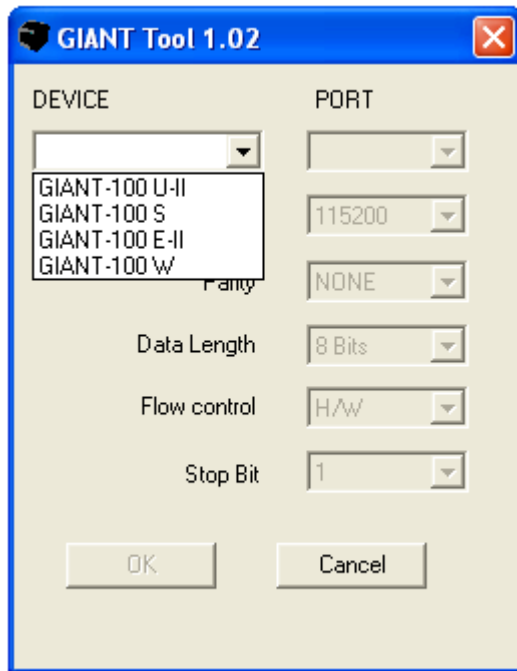
- NV Logo download
- User Setup
- Firmware download

### INTERFACES

- RS-232c (Serial)
- USB (Virtual COM , USB)
- Ethernet (TCP/IP)
- Wi-Fi (TCP/IP)

### 3. User Interface

#### 1) Device Configuration Dialog



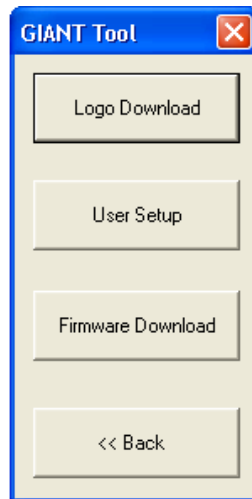
#### Device Configuration Dialog

You can select the device which you want to use comfortable, on the GIANT Tool.

#### <DEVICE LIST>

- GIANT-100S : GIANT-100 with Serial Interface
- GIANT-100U-II : GIANT-100 with USB Interface
- GIANT-100E-II : GIANT-100 with Ethernet-II Interface  
(TCP/IP type)
- GIANT-100W : GIANT-100 with Wi-Fi(WLAN) Interface  
(TCP/IP type)

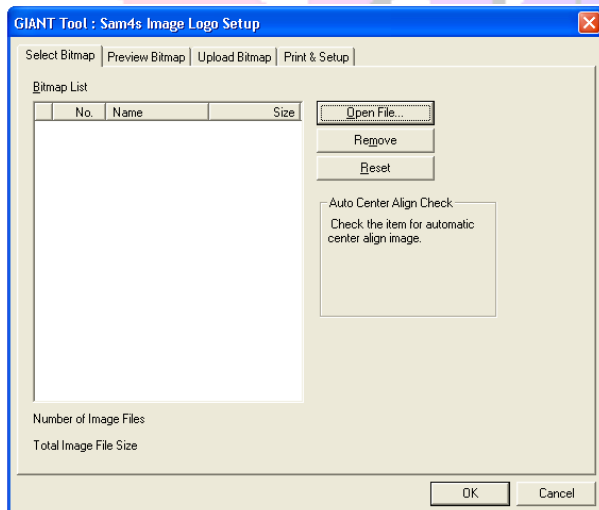
## 2) Function Select Dialog



### Function Select Dialog

You can select a function button as you want to use.

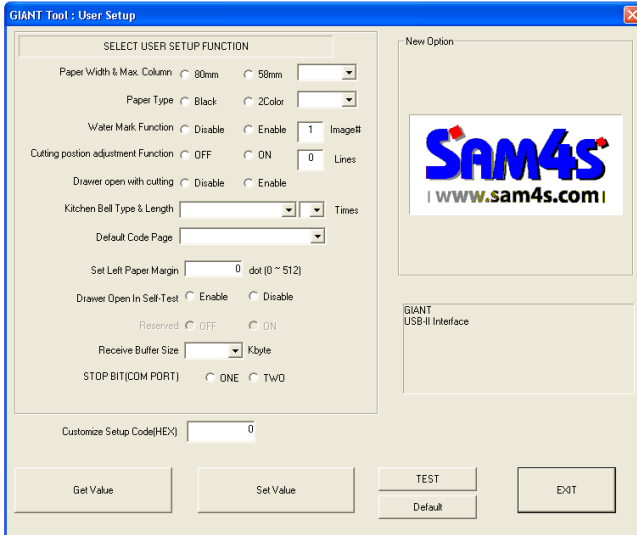
## 3) NV Logo Download Dialog



### NV Image Logo Download Dialog

It is consisted with five property pages which are Select, Preview, Upload, Print and Setup Bitmap tab.

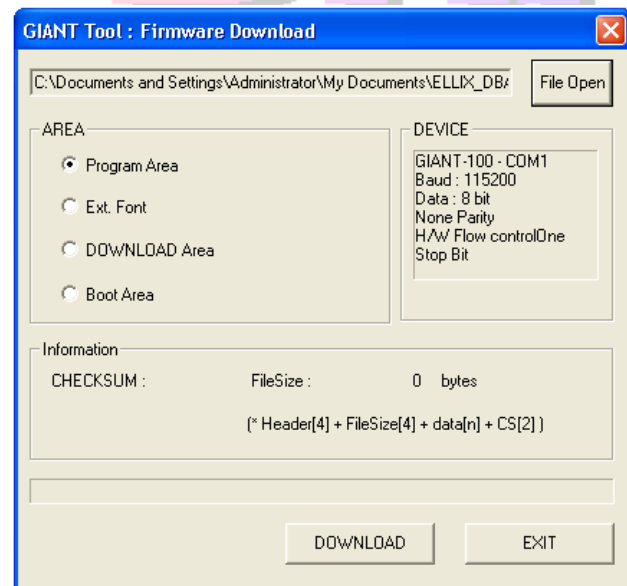
#### 4) User Setup Dialog



##### User Setup Dialog

You can change variable custom settings only for GIANT series.

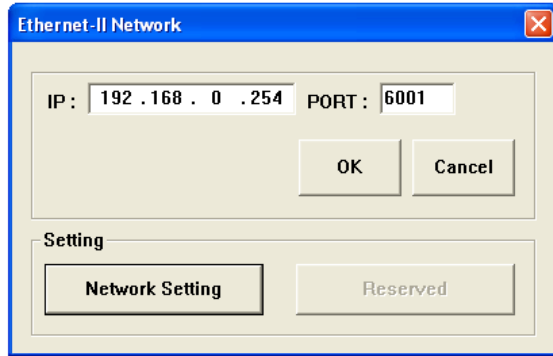
#### 5) Firmware Download Dialog



##### Firmware Download Dialog

You can update printer's firmware.

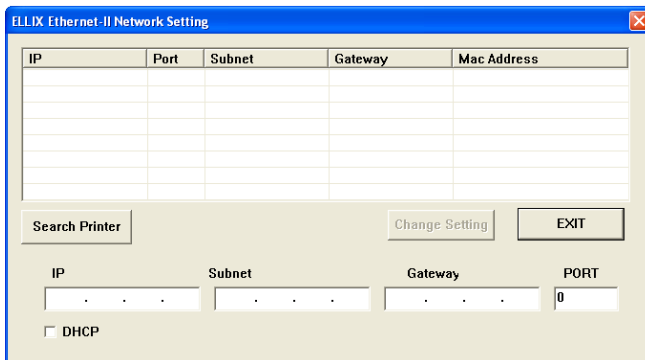
## 6) Network Setting Dialog (Ethernet-II Interface)



The dialog box titled "Ethernet-II Network" contains two input fields: "IP:" with the value "192.168.0.254" and "PORT:" with the value "6001". Below these fields are "OK" and "Cancel" buttons. At the bottom, there is a "Setting" section with a "Network Setting" button and a "Reserved" button.

### Ethernet-II Network Dialog

If you enter IP and Port number, You can access Ethernet-II interface.

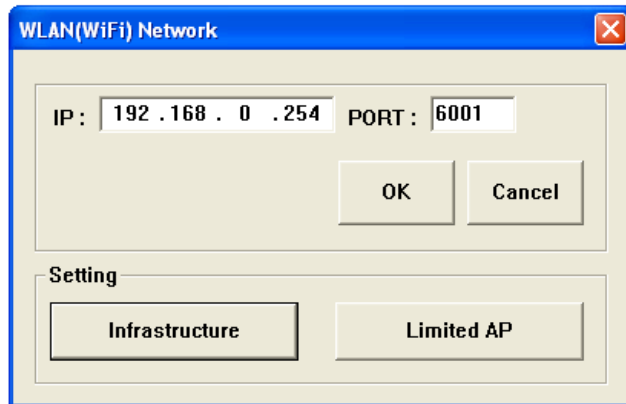


The dialog box titled "ELLIX Ethernet-II Network Setting" features a table with columns: IP, Port, Subnet, Gateway, and Mac Address. Below the table are buttons for "Search Printer", "Change Setting", and "EXIT". At the bottom, there are input fields for "IP", "Subnet", "Gateway", and "PORT" (with a value of "0"). A checkbox labeled "DHCP" is also present.

### Ethernet-II Network Setting Dialog

You can change a printer network setting.

## 7) Wi-Fi Network Setting Dialog (Wi-Fi Interface)



**WLAN(WiFi) Network**

IP : 192 . 168 . 0 . 254    PORT : 6001

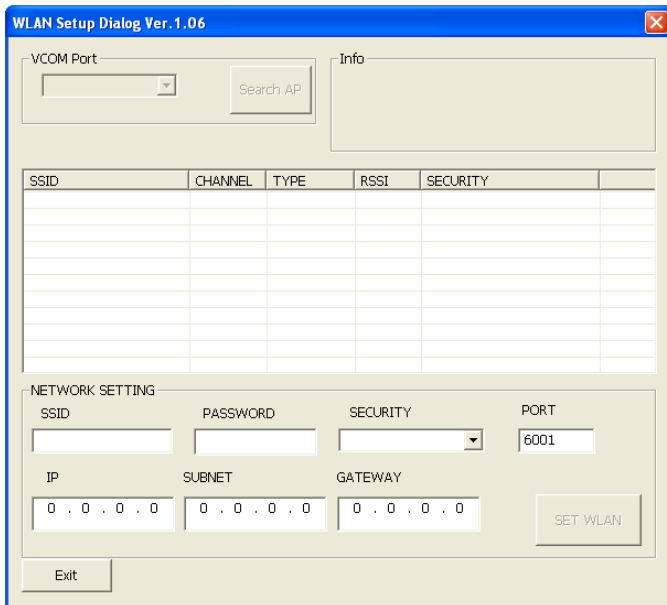
OK    Cancel

**Setting**

Infrastructure    Limited AP

### Wi-Fi Network Dialog

If you enter IP and Port number, You can access Wi-Fi interface.



**WLAN Setup Dialog Ver. 1.06**

VCOM Port: [Dropdown]    Search AP

Info

SSID	CHANNEL	TYPE	RSSI	SECURITY

**NETWORK SETTING**

SSID: [Text]    PASSWORD: [Text]    SECURITY: [Dropdown]    PORT: 6001

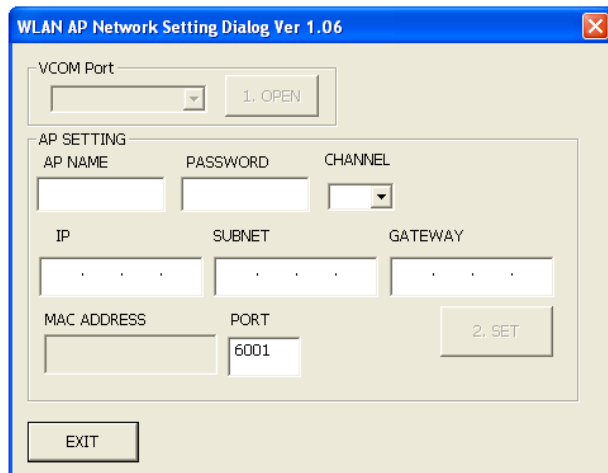
IP: 0 . 0 . 0 . 0    SUBNET: 0 . 0 . 0 . 0    GATEWAY: 0 . 0 . 0 . 0

SET WLAN

Exit

### Infrastructure Dialog

You can change a printer Wi-Fi network setting for Infrastructure..



**WLAN AP Network Setting Dialog Ver 1.06**

VCOM Port: [Dropdown]    1. OPEN

**AP SETTING**

AP NAME: [Text]    PASSWORD: [Text]    CHANNEL: [Dropdown]

IP: [Text]    SUBNET: [Text]    GATEWAY: [Text]

MAC ADDRESS: [Text]    PORT: 6001    2. SET

EXIT

### Limited AP Dialog

You can change a printer Wi-Fi network setting for Limited AP.



### 3. Description of each functions

#### 1) Logo download

Logo download function can be used for image downloading to NV (Non-Volatile) memory of GIANT printer or for image printing from it.

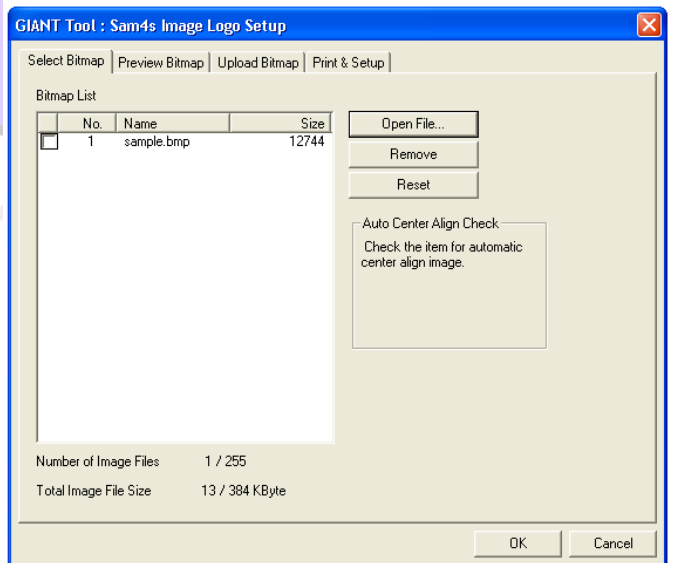
##### (1) General feature

1. Maximum memory capacity: 128Kbyte (GIANT-100 is fixed 128Kbyte.)
2. Total logo count : Maximum 255
3. Automatic center align
4. Black/White diverging point
5. Image data format : Changeable to a file

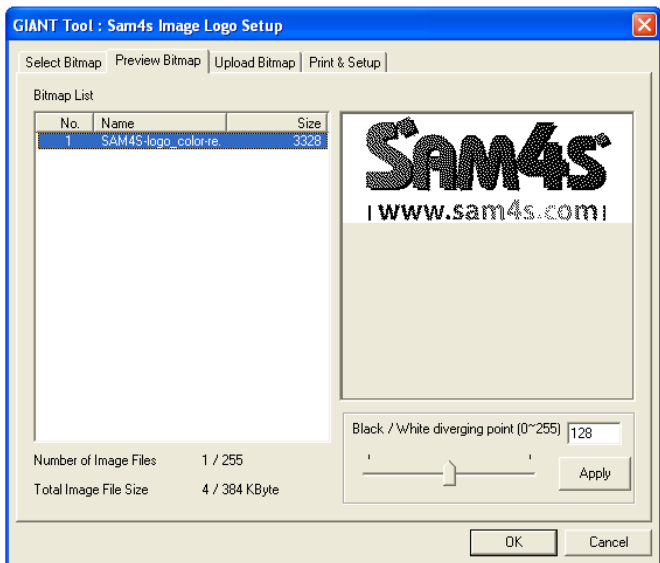
##### (2) Logo registration sequence

- ✓ Select the bitmap file stored in a printer.
- ✓ If you want to save with “Automatic center align” feature, check the checkbox located at the head of Bitmap No. like a red square.

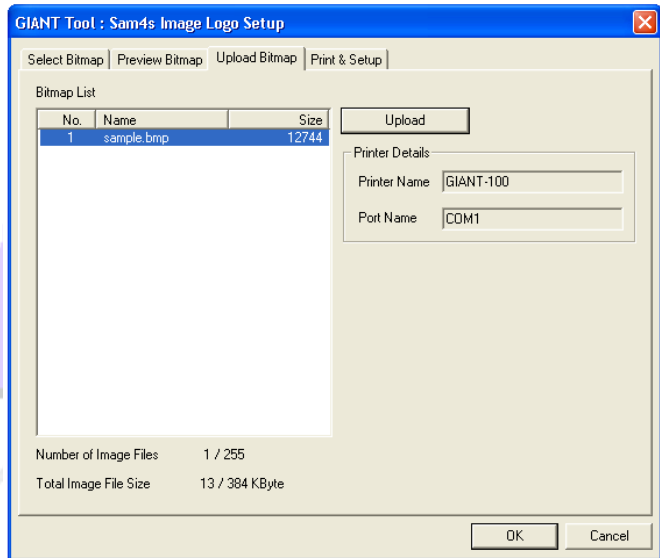
Note) It is very useful the case of printing a small logo image. ( size : 512 x 600 pixels or less)



- ✓ At Preview Bitmap tab, you can see the logo file you selected.
- ✓ **Black/White diverging point:** If an image output is too dark or too light, you can adjust the diverging point to suitable value for output which you want to get.



- ✓ If you press the Upload button, the Bitmap image data will be downloaded in the NV graphics memory area of the connected printer. If uploading process finishes successfully, the printer feeds paper a little.



- ✓ You can specify the Printing Range for the logos uploaded in the printer's NV graphics memory area. Selectable choices are below :

**All** : Prints all logo images saved in the printer connected currently.

**Selection** : Prints the selected logo image saved in the printer connected currently. Selection range can be from 1 to 255. But you can select multiple logo-images by using ',' or '-' in the edit box.

(e.g. "1,5,10" or "1-5,8,20-22")

- ✓ You can specify Quality.

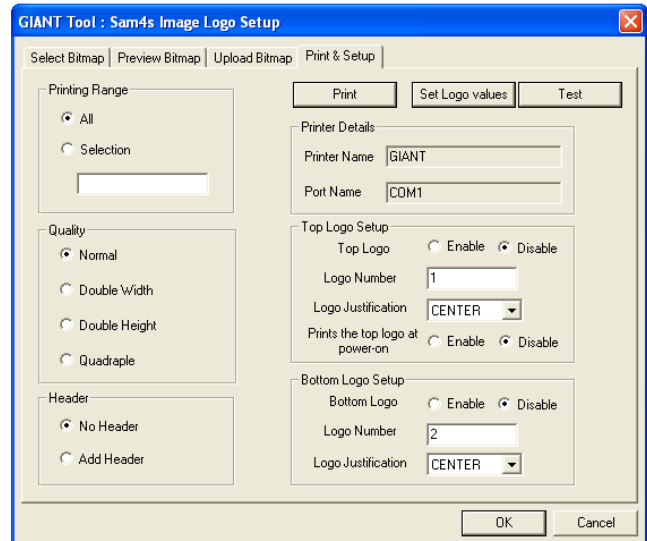
**Normal** : Print in single height and width

**D/Width** : Print in double width

**D/Height** : Print in double height

**Quadruple** : Print in double height and width

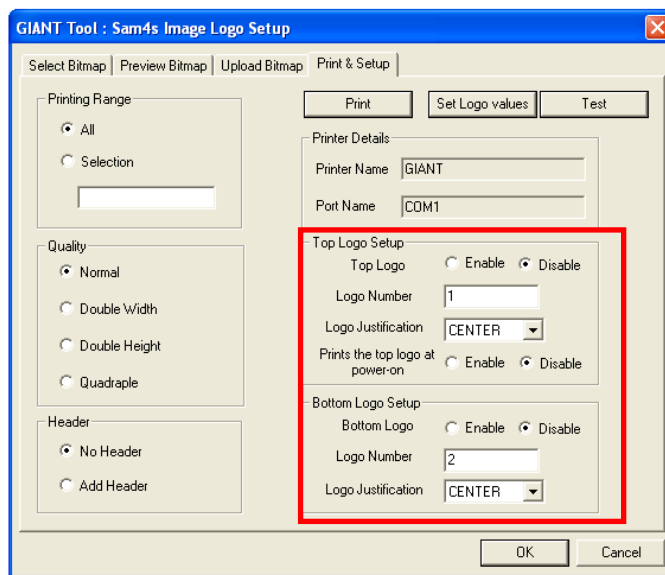
- ✓ You can select option with/without Header as a numbering value of the logo. It is printed on top of logo image.



| www.sam4s.com |

### (3) Top/bottom logo printing

You can specify the top/bottom logo printing in "Print Bitmap" tab. When use this function, you should use cutting command (ex : GS V m n ).



Hideaway #2  
16040 Cedar Ave S  
Rosemount, MN 5568  
(952)

04/15/11 Order # 51  
8:28 pm Customer # 0

Sales Person:

=====		
A1 Fakher 250g Cherry		
1 @ 13.99 each		13.99*
=====		
Sub-Total:		13.99
=====		
Tax[7.125]:		1.00*
=====		
Total:		14.99
=====		
Total Paid:		0.00
Change:		0.00

Thank  
You



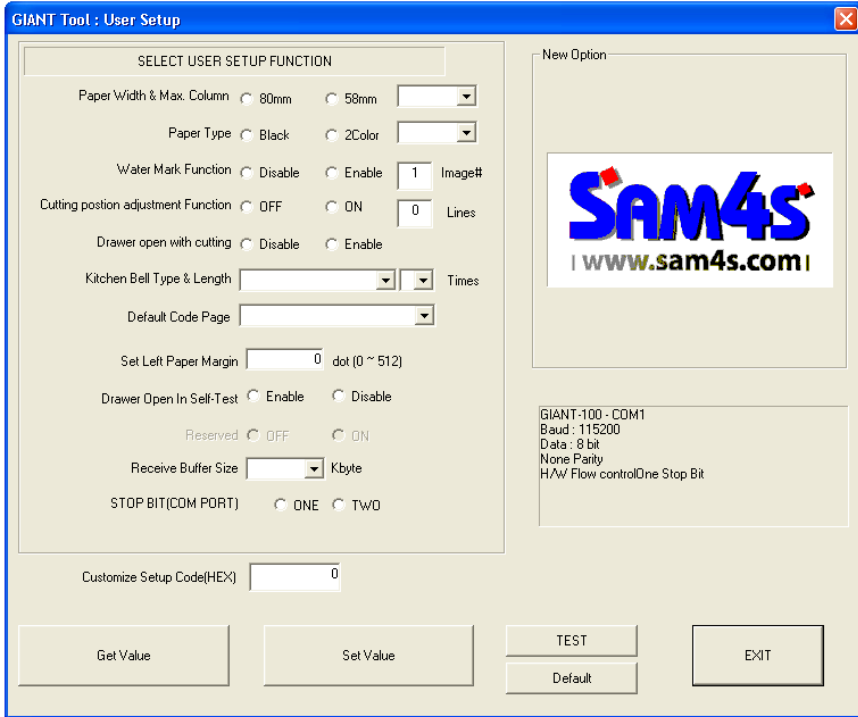
#### [Top logo Setup]

- Top Logo : Enable/disable top logo printing
- Logo number : Sets top logo number.
- Logo Justification : Specifies left/ center/ right justification.
- Prints the top logo at power-on : Makes extended settings for top logo printing.

#### [Bottom logo Setup]

- Bottom Logo : Enable/disable bottom logo printing
- Logo number : Sets top logo number.
- Logo Justification : Specifies left/ center/ right justification.

## 2) User setup



✓ **About Buttons**

**[TEST]**  
You can test the printer and check the printer's setting. If you press this button, GIANT prints out some characters and cuts the paper.

**[Default]**  
Can reset to default values all of them.

**[Get Value]**  
It queries the current setting values to the printer and shows those values on the dialog.

**[Set Value]**  
It sets values with displayed on the dialog or selected of the printer.

**[EXIT]**  
Quits this application and returns to Function Select Dialog.

## (1) Description of User Setup Options

### A. Paper Width & Max Column (Default : 80mm / 30 column In 58mm)

This is an option of the paper width for printing. It can be set the paper 58mm or 80mm width.

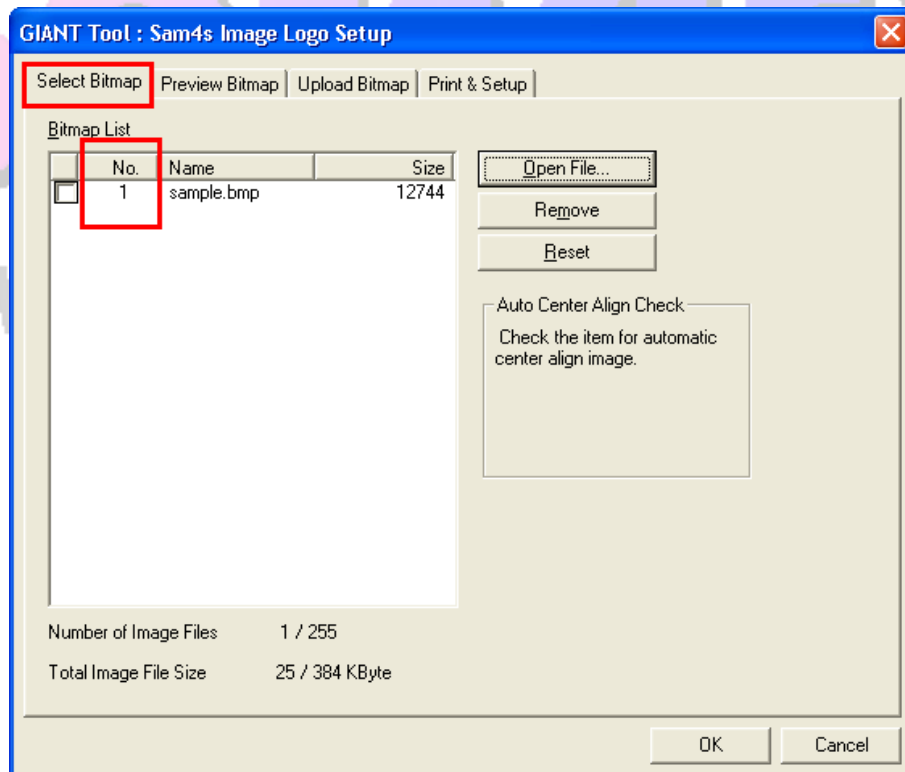
### B. Paper Type and Black Density (Default : Black / Medium)

This is an option of the paper type. It can be set Black or 2Color. The second color can be red or blue by 2 color thermal paper type.

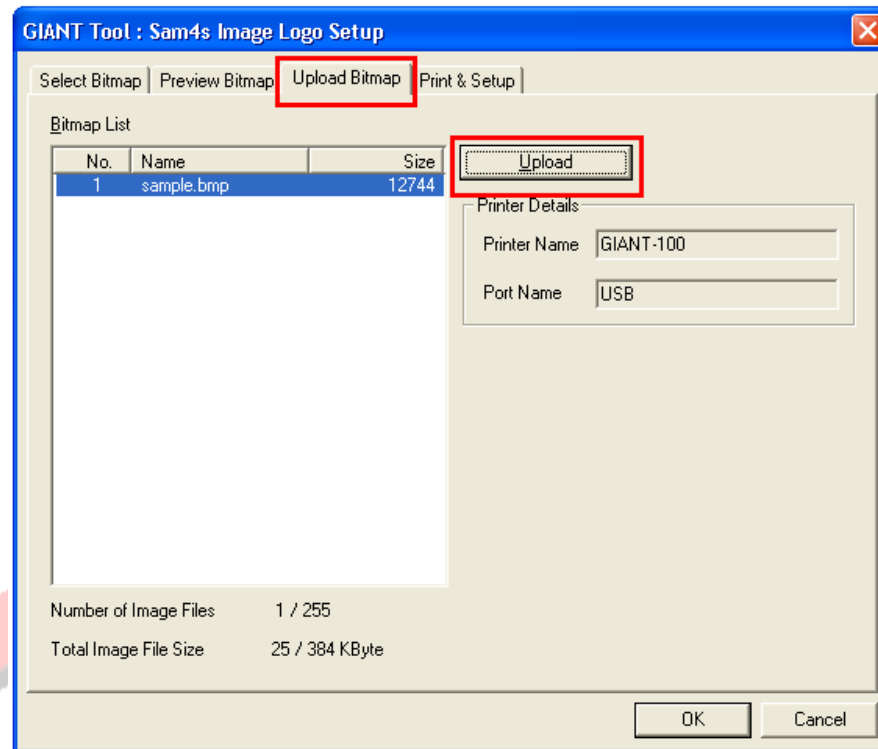
### C. Water Mark Function (Default : Disable)

It is GIANT that prints background image on your receipt without any additional commands. You can use Watermark with Image Logo Downloader in GIANT Tool. If you want to print background image, prepare the bitmap image which will be background. And then follow steps as below.

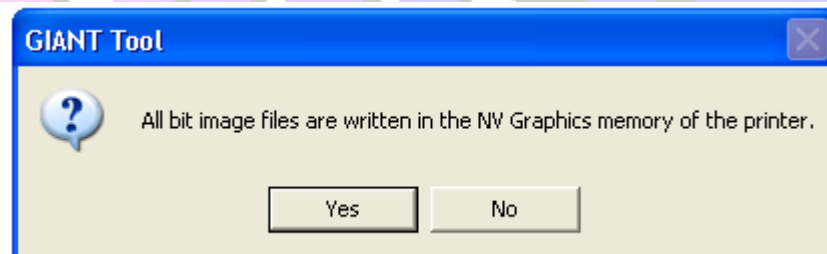
- ① Run Image Logo Downloader and select the prepared bitmap image. And check the image number.



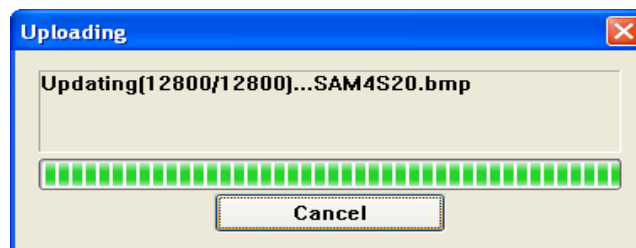
- ② Go to the “Upload Bitmap” tab and click the “Upload” button.



- ③ It will show the message box like below, click the “YES” button.



- ④ All of images saved before on the printer will be deleted and new image data will be downloaded on your printer.



- ⑤ Printer feeds some paper when the logo upload is completed successfully.
- ⑥ Close Image Logo Downloader and run User Setup from Function Select Dialog.

- ⑦ Set Enable of the Water Mark Function and input the number of logo image that you want to print as a background. (Refer step ①) And then click the “Set Value” button. The printer will be set values newly and Water Mark Function setting is finished.

GIANT Tool : User Setup

SELECT USER SETUP FUNCTION

Paper Width & Max. Column ☐ 80mm ☐ 58mm

Paper Type ☐ Black ☐ 2Color

Water Mark Function ☐ Disable ☒ Enable  Image#

Cutting position adjustment Function ☐ OFF ☐ ON  Lines

Drawer open with cutting ☐ Disable ☐ Enable

Kitchen Bell Type & Length   Times

Default Code Page

Set Left Paper Margin  dot (0 ~ 512)

Drawer Open In Self-Test ☐ Enable ☐ Disable

Reserved ☐ OFF ☐ ON

Receive Buffer Size  Kbyte

STOP BIT(COM PORT) ☐ ONE ☐ TWO

Customize Setup Code(HEX)

Get Value Set Value

- ⑧ Try to click the “TEST” button and you will see the fantastic receipt with background image. Left picture is the sample receipt that is applied the Water Mark Function. Right one is bitmap image that is used as a background image.





**D. Cutting position adjustment Function (Default : Disable / 0 Line)**

If your receipt is cut wrong, this option will be very useful with you, it makes the application not change.

When this option set to enable, printer will feed amount (line number input) of paper before cutting.

**E. Drawer open with cutting (Default : Disable)**

This option will make drawer take an open-signal when printer is received the paper cutting command.

**F. Kitchen Bell Type & Length (Default : Bell / 3 times)**

GIANT offers one bell and three melodies for using on kitchen. It is possible to adjust ringing time or length of melody.

The offered bell types are below.

**Bell:** Default bell

**Melody 1 ~ 3:** Three different melodies

**Other Bell:** Blend bell (Internal oscillation type)

**G. Default Code Page (Default : PC437-USA, Standard Europe)**

If you want to fix the specified code page as default, select one of code pages in the list and then click the "Set Value" button.

**H. Set Left Paper Margin (Default : 0 dot)**

Left margin of paper is changeable for better receipt (printed) shape. For example, if you are using 40-column-format receipt on GIANT, you may be seen a print-result tended to left side. In this case you can take much better result, if you set 24-dots which is the value of left margin.

**I. Drawer Open In Self-Test (Default : Disable)**

Check the drawer operation at print self-test mode.

**J. Received Buffer Size (Default : 4Kbytes)**

GIANT's received buffer can be 64Kbytes maximum. You can change buffer size with this option.

**K. Stop Bits (COM) (Default : ONE)**

Stop bits used during serial communication can be changed.

**L. Customize Setup Code (Default : 0)**

You can enter a Customize Setup Code .

## (2) New Option

### A. Internal KB Operation (Default: Internal KB)

Set a kitchen bell to output the melody.

### B. Upside-down (Default : Disable)

Set the function of upside-down print per page. (Max : 30cm page length)

If WaterMark/Two Color/Top & bottom logo function is on, this function is impossible to use.



### 3) Firmware download

#### (1) GIANT-100

Firmware update sequences are below.

1. Remember folder directory with downloaded firmware file.
2. Turn the GIANT off.
3. Check the cable connection between GIANT and your PC. **Please turn off all dip switches.**

**When printer interface is WLAN, please connect USB cable for f/w update.**

Beeps twice

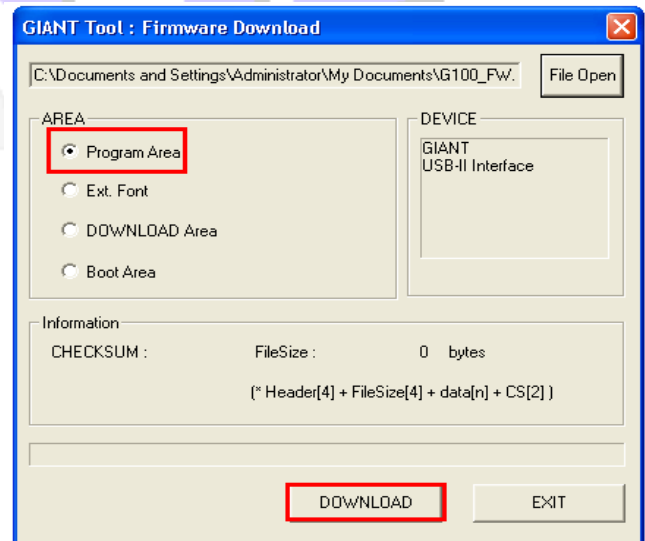
4. Open the printer cover.
5. Turn on GIANT with FEED button; hold the feed button with 2 times buzzer.
6. Now, GIANT is ready to update firmware.



7. Run the "Firmware Update Dialog" on GIANT Tool and open the downloaded firmware file.
8. And then, select the download area which you want to update. (generally select the "Program area")
9. Select the connected port on your PC.
10. If you click the download button, the firmware update will be started and this application will show the status with progress-bar on dialog bottom side.

(If progress-bar does not proceeding well, when you click download button, you should check 'Port Select' or cable connection whether settings are correct or not.)

11. If download is done, printer will notify download completion with 5 times buzzer. (in surely case that download is succeeded). And then turn off a printer.
  - If buzzer does not ring that means communication ERROR is occurred during download. In this case, please check Cable connection status.
12. Please try to operate 'SELF TEST' and check the updated firmware version.

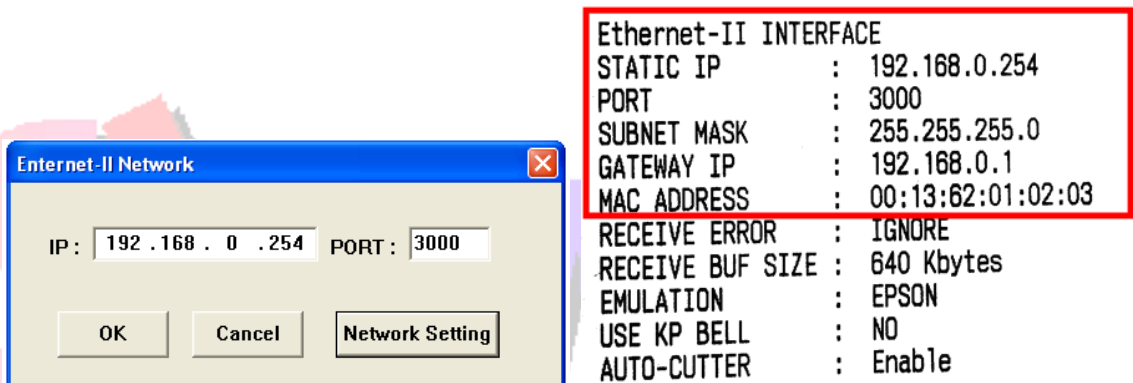


#### 4) Network Setting Dialog (Ethernet-II Interface)

##### (1) Ethernet-II Network Dialog

When you selected a Ethernet-II (GIANT-100 EII) In the "Device Configuration Dialog" and pressed OK button, Ethernet-II Network Dialog is appears. Enter the IP address and port number to connect. Press the OK button. Function Select Dialog will be executed.

In addition, you can select the "Ethernet-II Network Setting dialogue" It can change the network settings for the printer. Do you want to check GIANT IP and Port number? Please run the Self-Test. You can confirm all the settings of the printer.



| www.sam4s.com |

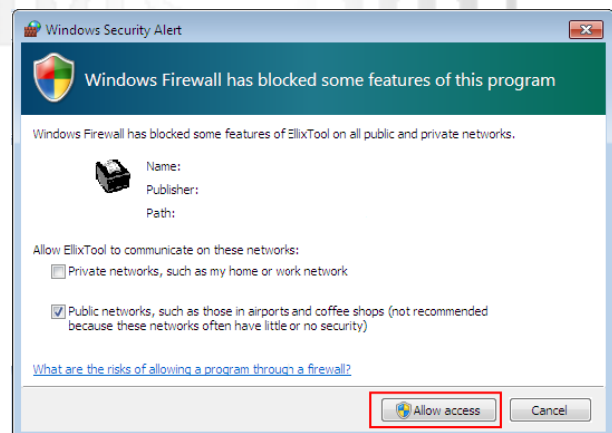
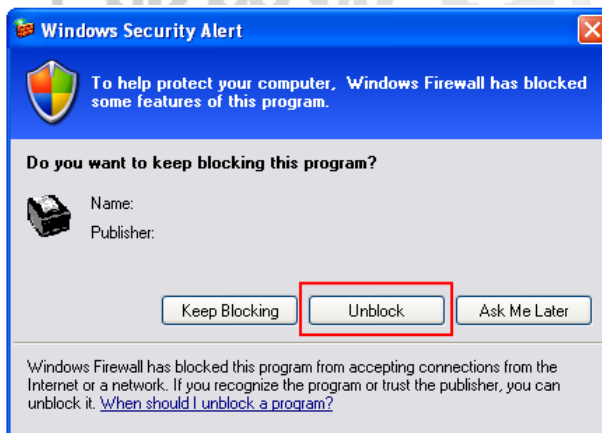
## (2) Ethernet-II Network Setting Dialog

Here you can change the network settings for the printer. If you would like to change the network settings, please follow these steps.

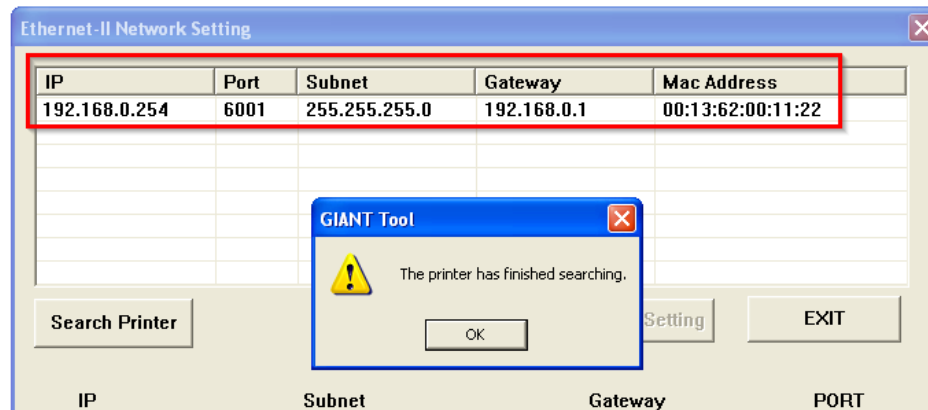
1. The printer is connected to the router. PC must be connected to the same router.
2. Turn on GIANT-100 normally.
3. Run the "Ethernet-II Network Setting Dialog." Press the "Search Printer" button.

The dialog box titled "Ethernet-II Network Setting" contains a table with 5 columns: IP, Port, Subnet, Gateway, and Mac Address. Below the table are three buttons: "Search Printer" (highlighted with a red box), "Change Setting", and "EXIT". At the bottom, there are input fields for IP, Subnet, Gateway, and PORT (with a value of 0), and a checkbox for "DHCP".

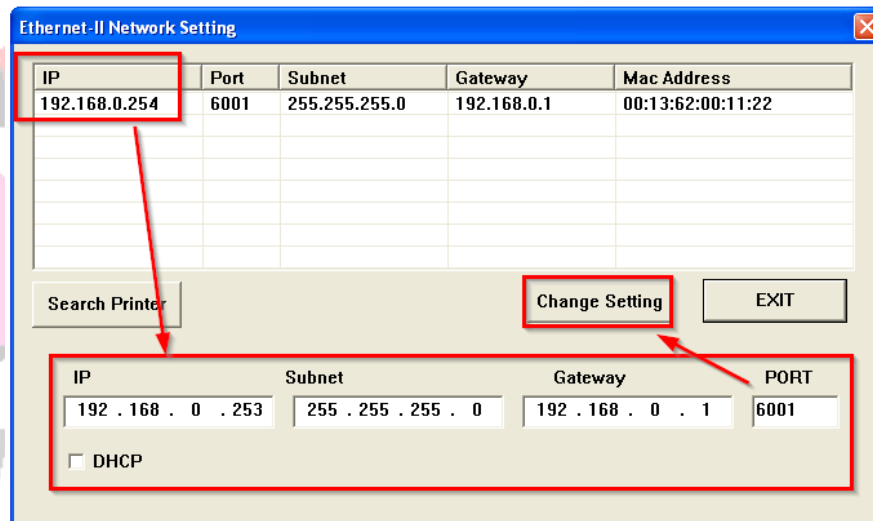
4. If you can see the "Windows Security Alert" message, Click a "Unblock" button (Windows XP) or "Allow access" button (Windows 7). And retry the 3 Step.



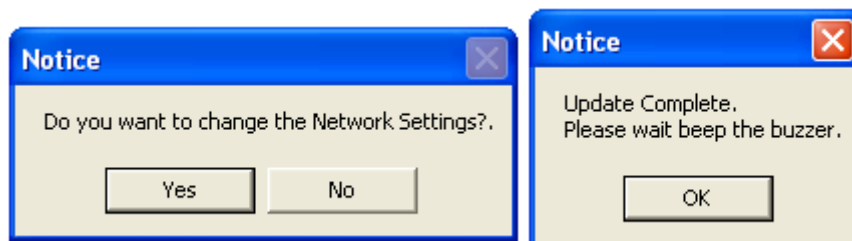
- If you can see the "The Printer has finished searching." message, detected the printer's network settings appear. (If you cannot see any list, Please check cable and network.)



- Choose one to change the IP. Enter the network settings you want (as shown). Finally, press the "Change setting" button.



- You can see the "Do you want to change the Network Setting?" message. Press the "Yes" button. Printer will notify update completion with buzzer, and then printer will be restart.



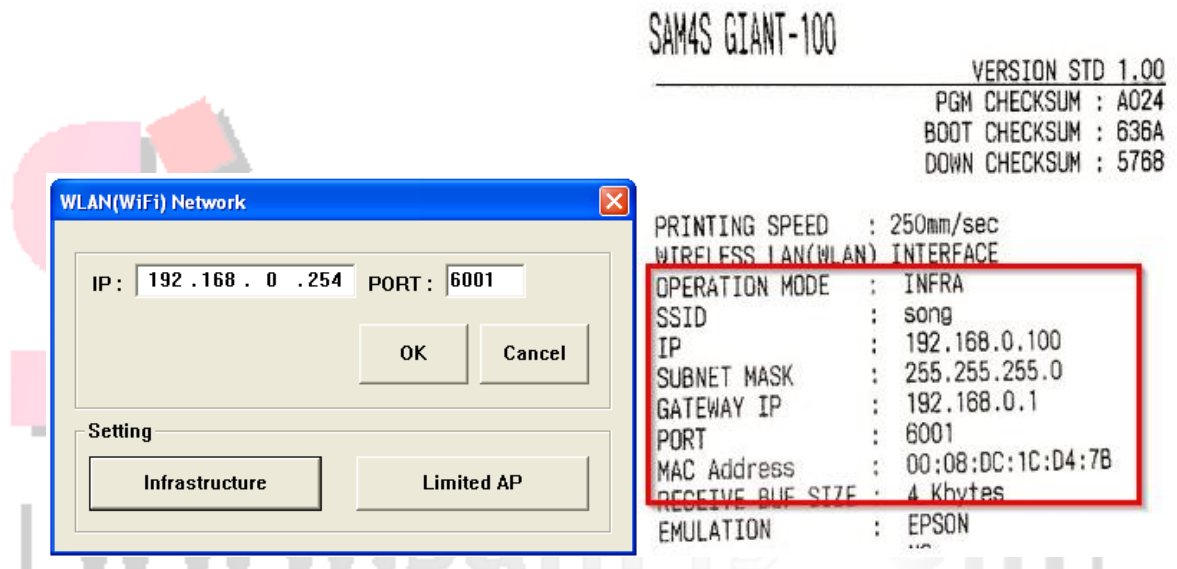
- Do self-test for confirming the updated network setting.

## 5) Network Setting Dialog (Wi-Fi Interface)

### (1) Wi-Fi Network Dialog

When you selected a GIANT-100 Wi-fi (GIANT-100 W) In the "Device Configuration Dialog" and pressed OK button, Wi-Fi Network Dialog is appears. Enter the IP address and port number to connect. Press the OK button. Function Select Dialog will be executed.

In addition, you can select the "Infrastructure Dialog" and "Limited AP Dialog". It can change the network settings for the printer. Do you want to check GIANT-100 IP and Port number? Please run the Self-Test. You can confirm all the settings of the printer.



## (2) Glossary of Terms

### AP (Access Point)

AP, actually as a device is a hotspot that is like an Ethernet hub. It can be possible to communicate, which is binding one network with wireless clients (devices) nearly located in AP. And it can be possible to connect to WAN, backbone or another AP (hotspot) through the Ethernet line connected with one AP.

### Infrastructure

If several terminals (PC, PCPOS etc.) or clients connect to one AP and they are composed to the same network, this is called 'infrastructure'. In other words, infrastructure is a structure that GIANT-100 WLAN interface connects with PC or terminals through AP.



### Limited AP

Limited AP, which GIANT-100 WLAN interface is become AP by itself, can be possible to communicate directly with other terminals (PC, PCPOS etc.) or clients without any other APs.





### (3) Install a Virtual COM Driver (Windows XP, POSReady 2009)

Virtual COM port driver must be installed when WLAN Interface sets up. During installation, Please do these steps are following.

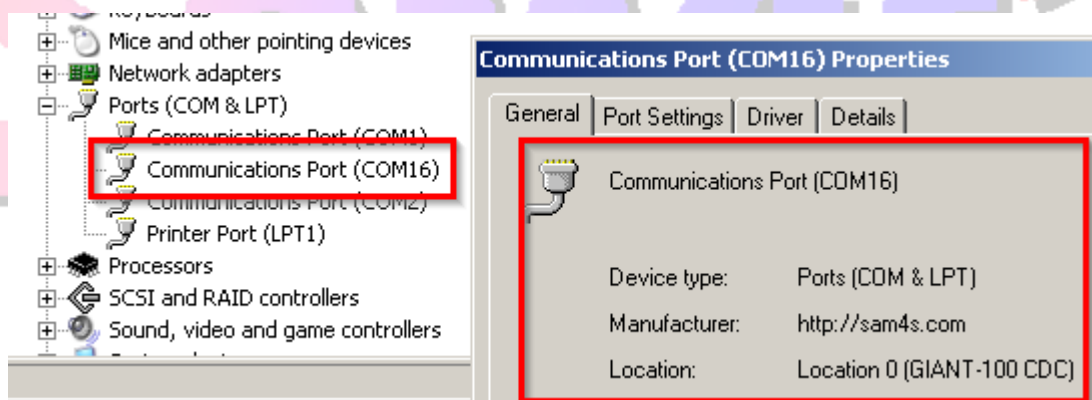
1. Turn a printer off.
2. Install SAM4S Printer Driver for installing virtual COM driver automatically.  
(SAM4SPrinterDriverInstallerV1.9.4.exe). Please refer to the manual of SAM4S Printer Driver Installer.  
(Select a connection type of the printer: ETHERNET CONNECTION  
Create a TCP/IP Printer Port: The value for use later)
3. Connect a USB cable to printer and PC.
4. Turn a printer on.
5. When "Found New Hardware Wizard" is appeared, select a "Install the software automatically (Recommended)"



6. Select a "Continue Anyway" Button.



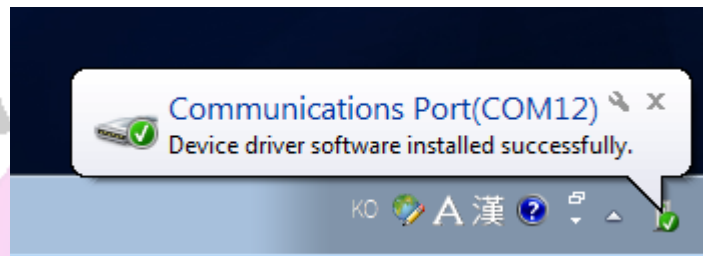
7. When the installation is completed, run the "Device Manager" for checking a New Virtual COM port number.



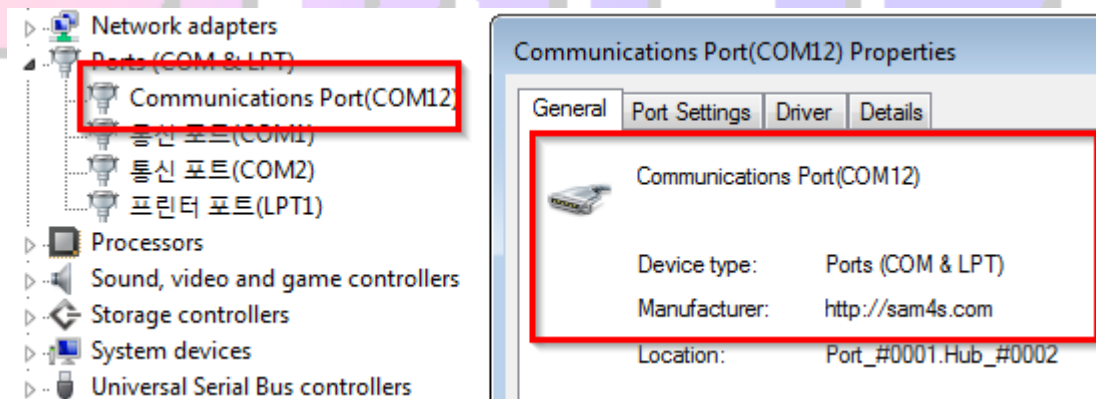
#### (4) Install a Virtual COM Driver (Windows 7, POSReady 7)

Virtual COM port driver must be installed when WLAN Interface to set up. During installation, Please proceed as follows, depending.

1. Turn a printer off.
2. Install SAM4S Printer Driver for installing virtual COM driver automatically.  
(SAM4SPrinterDriverInstallerV1.9.4.exe) Please refer to the manual of SAM4S Printer Driver Installer.  
(Select a connection type of the printer: ETHERNET CONNECTION  
Create a TCP/IP Printer Port: The value for use later)
3. Connect a USB cable to printer and PC.
4. Turn a printer on.
5. When Virtual COM port is installed properly in Windows, this balloon appears as shown.



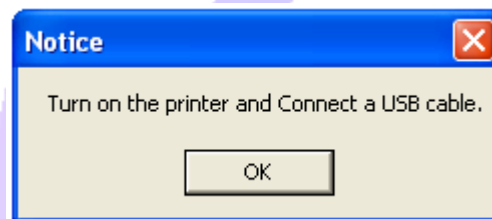
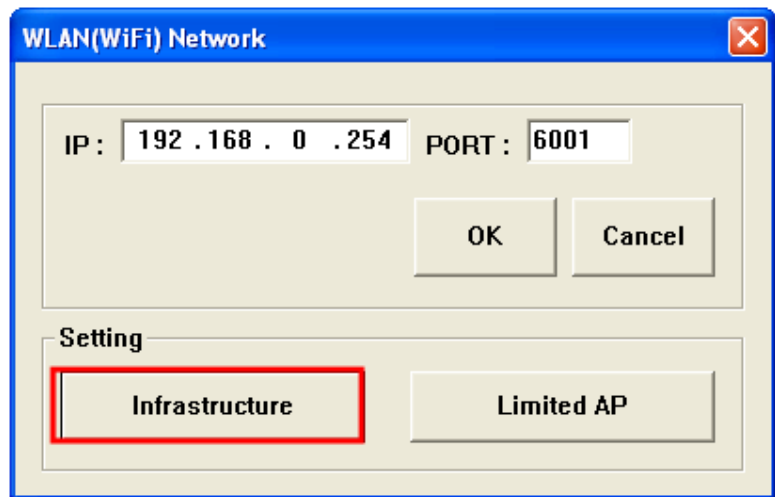
6. When the installation is completed, run the "Device Manager" for checking a New Virtual COM port number.



## (5) Infrastructure mode setting

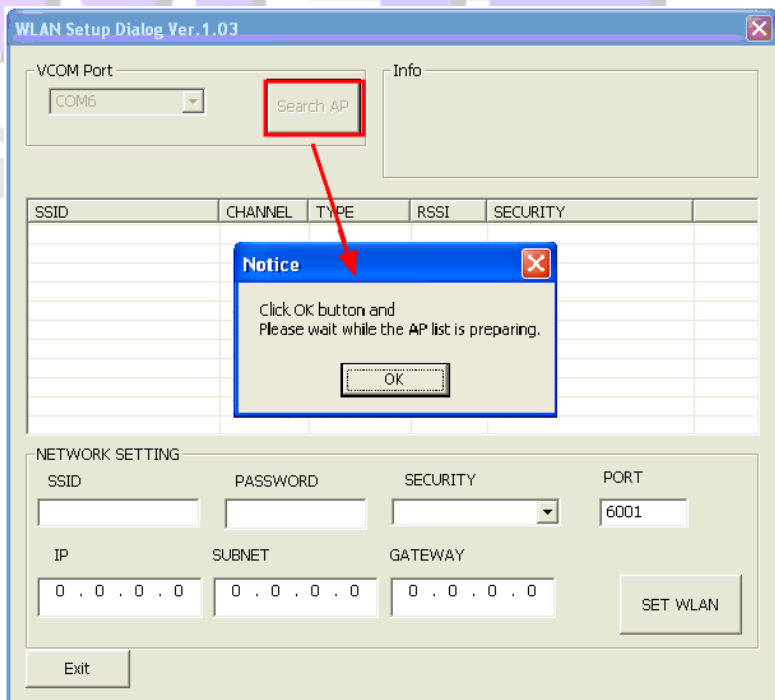
Click **"Infrastructure"** Button in Wi-Fi Network dialog.

When message box is appeared, turn a printer on and then connect USB cable PC and printer.



Click **"Search AP"** button to search AP list.

When message box is appeared, click "OK" button.



When “Search AP” is completed,  
WLAN interface information and  
list of around the AP devices appear .

- SSID : AP Name
  - CHANNEL: Communication channel
  - TYPE : Operation mode
  - RSSI : Received signal strength indication
- O: Weak signal  
OO : Normal signal  
OOO : Strong signal

**WLAN Setup Dialog Ver. 1.03**

VCOM Port: COM6 Search AP

Info:  
SSID : WIZFi2xx18878c Security : NONE  
IP : 192.168.1.101  
Subnet : 255.255.255.0  
Gateway : 192.168.1.1

SSID	CHANNEL	TYPE	RSSI	SECURITY
HelloWireless	10	INFRA	O	WEP
iptime	11	INFRA	O	NONE
NETGEAR-JY	11	INFRA	O	WPA-PERSONAL
HARDWARE	11	INFRA	OO	WPA2-PERSONAL
SAM4S3	11	INFRA	O	WPA-PERSONAL
HelloDial LAP	11	INFRA	OO	WEP
KIC	12	INFRA	O	WEP
OUTRIDER	12	INFRA	OO	WPA2-PERSONAL
TANGTANG	13	INFRA	O	WPA-PERSONAL
ALNetwork	13	INFRA	OO	WEP

NETWORK SETTING

SSID: [ ] PASSWORD: [ ] SECURITY: [ ] PORT: 6001

IP: 192.168.1.101 SUBNET: 255.255.255.0 GATEWAY: 192.168.1.1

SET WLAN

Exit

Select the SSID of AP which you want to connect. **(You must select Normal or Strong signal SSID for a safety communication.)**

**We are recommended that you use the security of WEP or WPA2 series.**

If you need a password for connection, enter a PASSWORD.

**If the security of SSID is WEP, you need to select WEP Encryption key.**

Enter the Network setting values (IP, SUBNET, and GATEWAY) that are assigned from the **network administrator**. And then click “SET WLAN” button.

**GIANT-100 WLAN Setup Dialog Ver. 1.00**

VCOM Port: COM16 Search AP

Info:  
SSID : JYW\_WIFI Security : WPA2  
IP : 192.168.0.254 SN : 255.255.255.0  
GW : 192.168.0.1 PORT : 6001  
MAC : 00:08:DC:1C:D4:7B

☐ Deep Scan

SSID	CHANNE	TYPE	RSSI	SECURITY
security	5	Infra	OOO	Open
JYW_WIFI	5	Infra	OOO	WPA2
Lobby-Demo	7	Infra	OO	WPA2-Mixed
SAM4S	6	Infra	OO	WEP
IPTIME_MAIN	6	Infra	OO	WPA2-Mixed

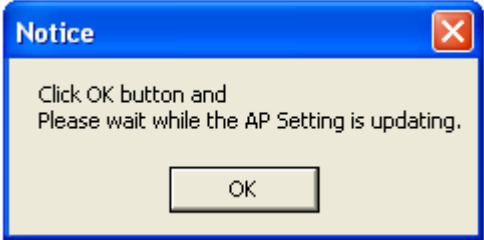
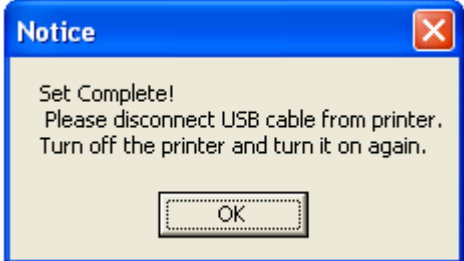
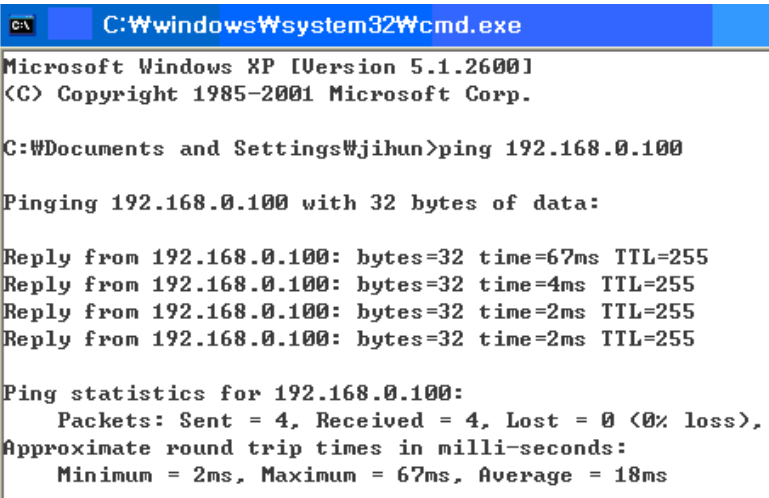
NETWORK SETTING

SSID: JYW\_WIFI PASSWORD: 1234567890 SECURITY: WPA2 WEP Encryption Key: [ ]

IP: 192.168.0.254 SUBNET: 255.255.255.0 GATEWAY: 192.168.0.1 PORT: 6001

SET WLAN

Exit

<p>Click the "OK" button; please wait for the completion of setting.</p>	
<p>When the setting is completed, this message appears as shown in the figure.</p> <p>Then disconnect the USB cable from the printer, the printer off and turn it on.</p>	
<p>Run the ping test at the command prompt.</p> <p>Ex) ping 192.168.0.100</p> <p><u>Note: PC and the printer must be on the same network.</u></p>	 <pre> C:\&gt; C:\Windows\system32\cmd.exe Microsoft Windows XP [Version 5.1.2600] (C) Copyright 1985-2001 Microsoft Corp.  C:\Documents and Settings\jijun&gt;ping 192.168.0.100  Pinging 192.168.0.100 with 32 bytes of data:  Reply from 192.168.0.100: bytes=32 time=67ms TTL=255 Reply from 192.168.0.100: bytes=32 time=4ms TTL=255 Reply from 192.168.0.100: bytes=32 time=2ms TTL=255 Reply from 192.168.0.100: bytes=32 time=2ms TTL=255  Ping statistics for 192.168.0.100:     Packets: Sent = 4, Received = 4, Lost = 0 (0% loss),     Approximate round trip times in milli-seconds:         Minimum = 2ms, Maximum = 67ms, Average = 18ms         </pre>

## (6) Limited AP setting

Click "**Limited AP**" Button to in Wi-Fi Network dialog.

When a message box is appeared, turn a printer on and then connect USB cable between PC and printer.

Click "**1.OPEN**" button to start WLAN interface setting.

After a few seconds you can see the value of setting WLAN Interface as following image.

- AP NAME: WLAN Interface SSID
- PASSWORD: Password to connect WLAN Interface  
(Enter a password with 8 ~ 63 number digits or alphabetic value.)
- MAC ADDRESS : MAC address of WLAN Interface
- IP : WLAN Interface IP
- SUBNET : WLAN Interface Subnet
- GATEWAY : WLAN Interface Gateway
- PORT : WLAN Interface Port number  
(6001,default)
- CHANNEL: WLAN channel

Enter unique AP name and 10-digit password and then set a network values (IP, SUBNET and GATEWAY).

**Ex) AP NAME : TEST\_AP**

**SECURITY : WPA2-Mixed (recommend)**

**PASSWORD : 1234567890**

**IP : 192.168.0.123**

**SUBNET : 255.255.255.0**

**GATEWAY : 192.168.0.1**

**CHANNEL : It varies from country to country**

→ch 1-11(USA only)

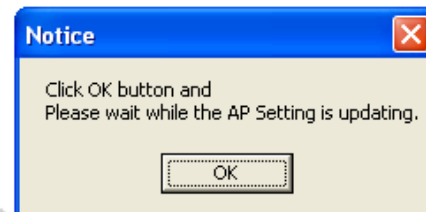
→ch 1-13(Europe, Japan)

Click the "2.SET" button; please wait for the completion of setting.

The dialog box shows the following settings:

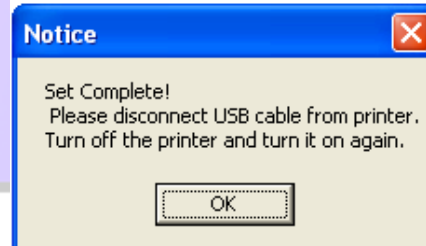
AP SETTING			
AP NAME	PASSWORD	SECURITY	CHANNEL
TEST_AP	1234567890	WPA2-Mixed	7
IP		SUBNET	
192 . 168 . 0 . 123		255 . 255 . 255 . 0	
GATEWAY			
192 . 168 . 0 . 1			
MAC ADDRESS		PORT	
00:08:DC:1C:D4:7B		6001	

Buttons: 1. OPEN, 2. SET, EXIT



When the setting is complete, a message appears as shown in the figure.

Disconnect the USB cable from the printer, then turn the printer off and turn it on.



To make sure it is set up properly, try searching WLAN interface.

This figure shows result of connection to WLAN interface on iPhone.

**Please refer to the manual for how to set up a wireless network of wireless LAN equipment you are using.**

Wi-Fi Networks TEST\_AP

Forget this Network

IP Address

DHCP BootP Static

IP Address 192.168.0.124

Subnet Mask 255.255.255.0

Router 192.168.0.1

DNS 192.168.0.123

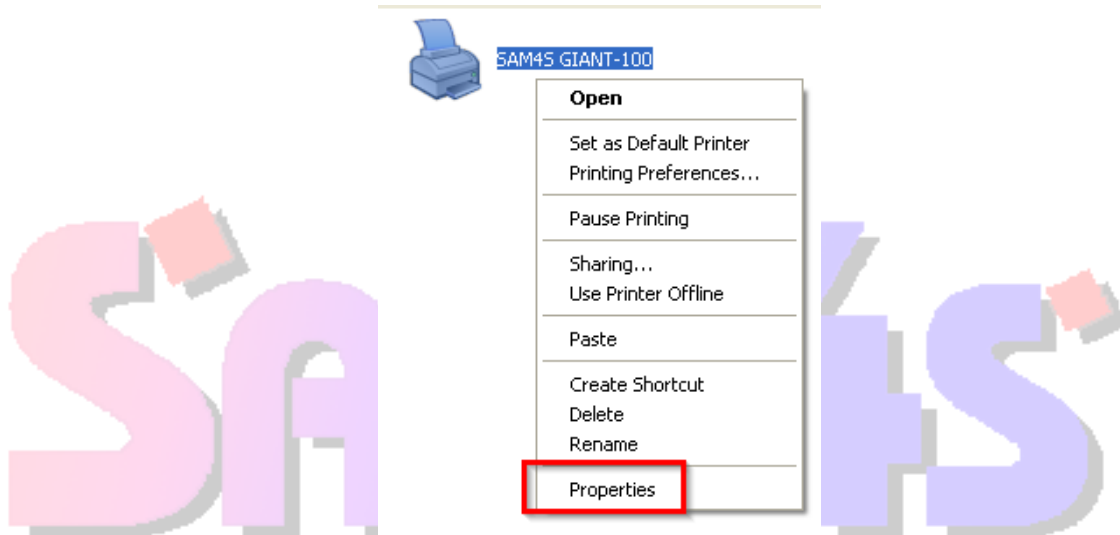


## (7) Print Test page (Windows XP, POSReady 2009)

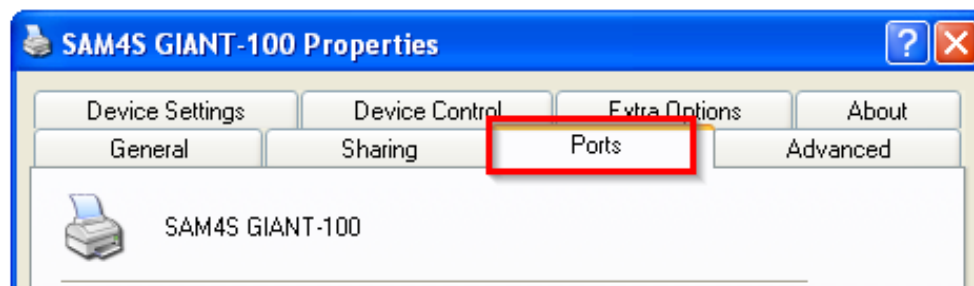
Install SAM4S Printer Driver Installer (SAM4SPrinterDriverInstallerV1.9.4.exe). Please refer to the manual of SAM4S Printer Driver Installer.

(Select a connection type of the printer: ETHERNET CONNECTION Input a Create a TCP/IP Printer Port: any value)

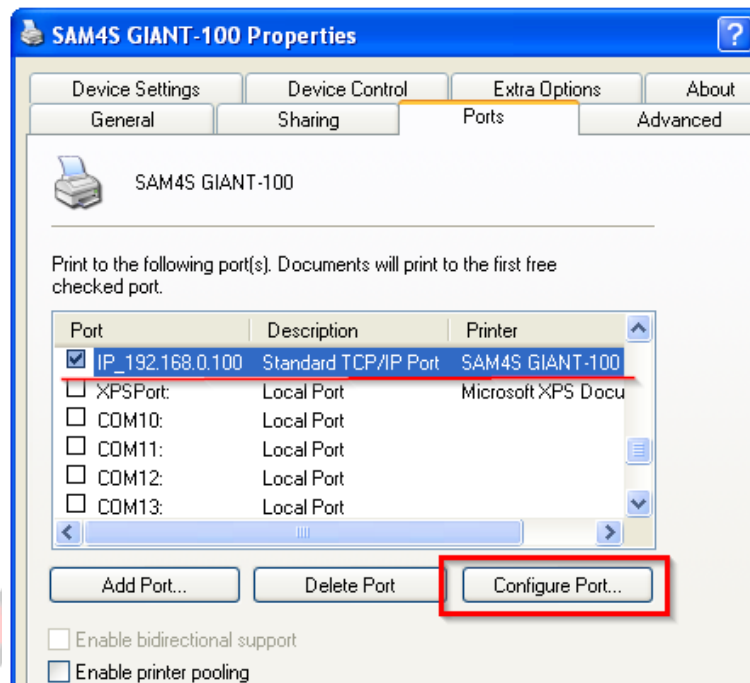
1. Turn a print off.
2. Disconnect a USB cable from printer.
3. Turn a print on again.
4. Select "SAM4S GIANT-100" in "Printers and Faxes" folder. Click a right mouse button and select "Properties".



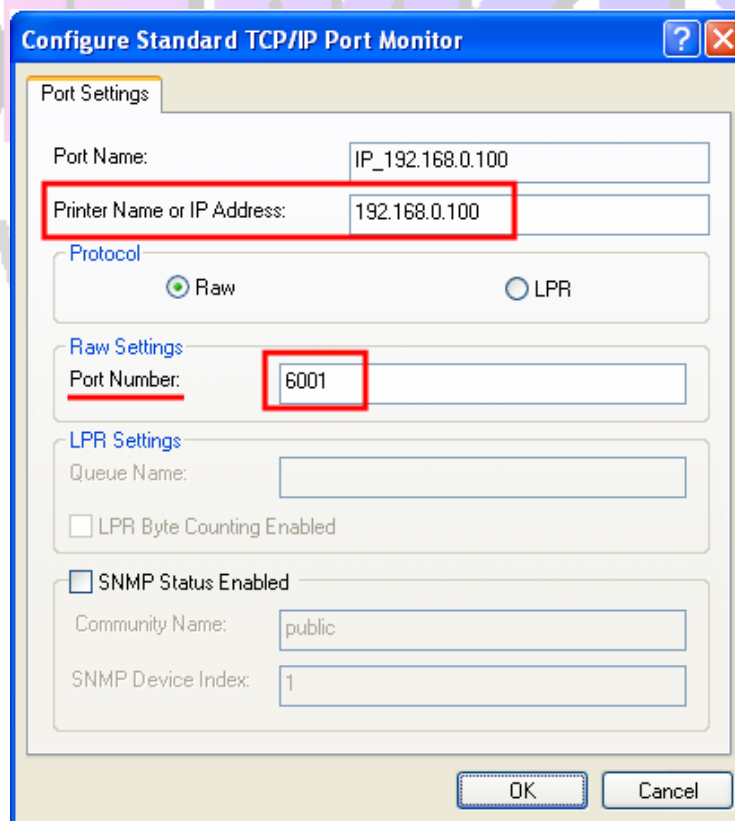
5. Move "Ports" tab.



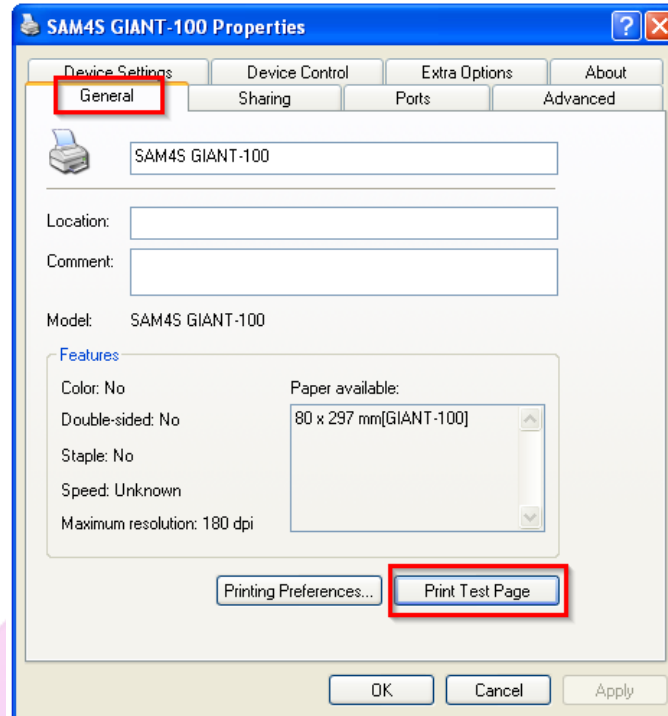
6. Select Standard TCP/IP Port and click "Configure Port" button.



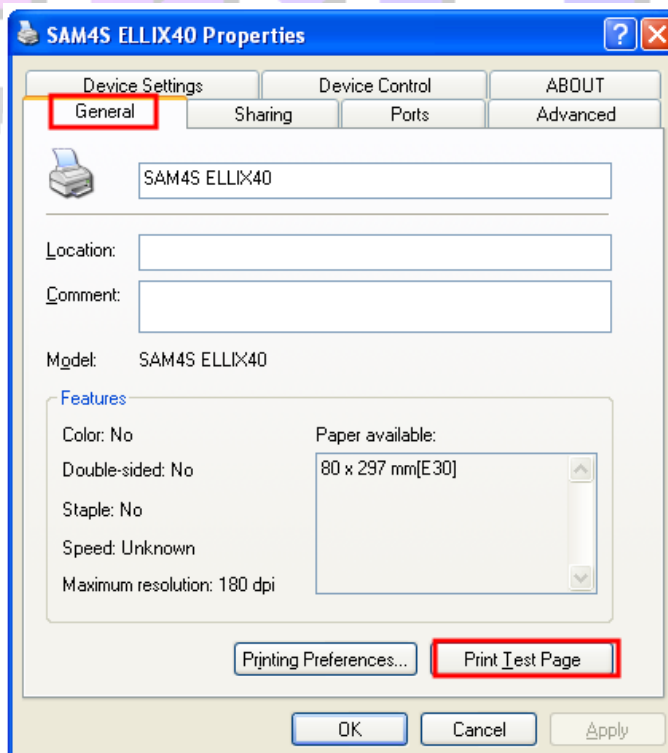
7. Enter a WLAN IP and Port number.



8. Move "General" tab; click "Print Test Page". If a printer doesn't print any page, check network setting and run ping test.



9. Move "General" tab; click "Print Test Page". If a printer doesn't print any page, check network setting and run ping test.

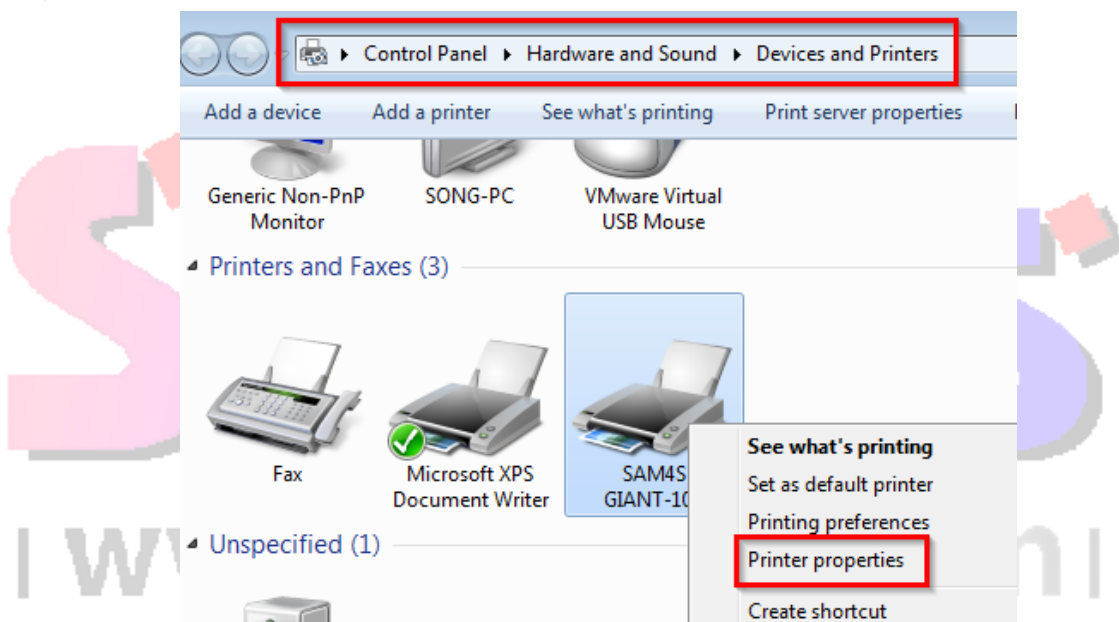


### (8) Print Test page (Windows 7, POSReady 7)

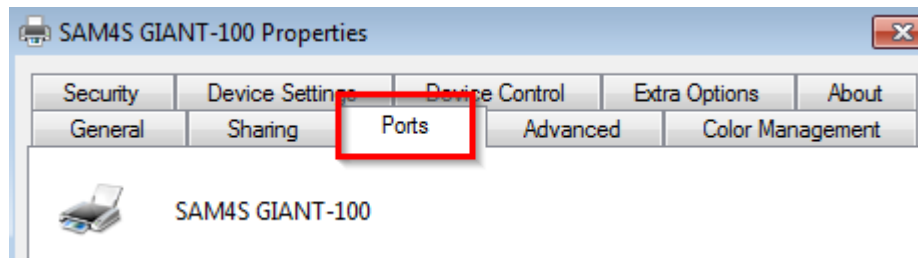
Install SAM4S Printer Driver Installer (SAM4SPrinterDriverInstallerV1.9.4.exe). Please refer to the manual of SAM4S Printer Driver Installer.

(Select a connection type of the printer: ETHERNET CONNECTION / Input a Create a TCP/IP Printer Port: The value for use later)

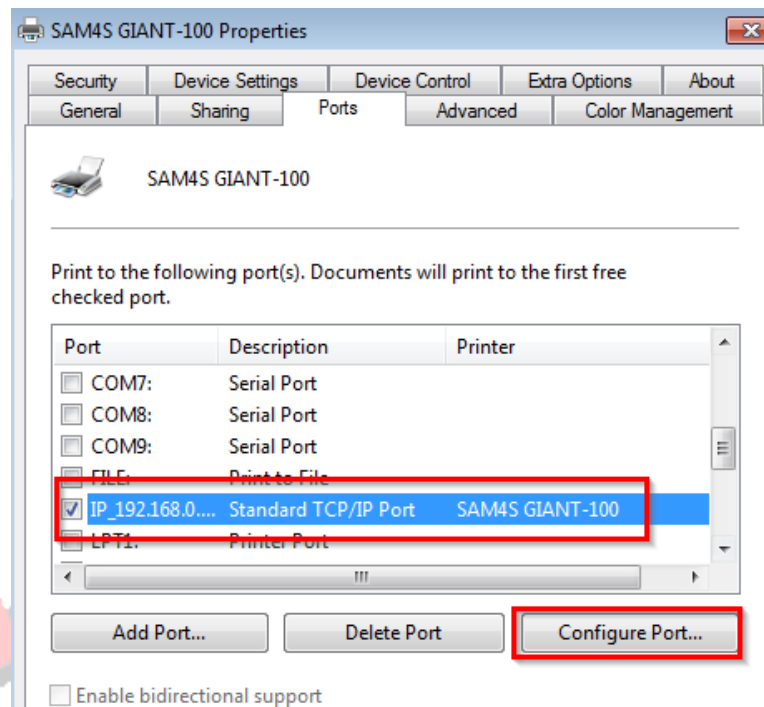
1. Turn a print off.
2. Disconnect a USB cable from printer.
3. Turn a print on again.
4. Click "SAM4S GIANT-100" in "start → Control Panel → Hardware and Sound → Devices and Printers". Click a right mouse button and click "Printer properties".



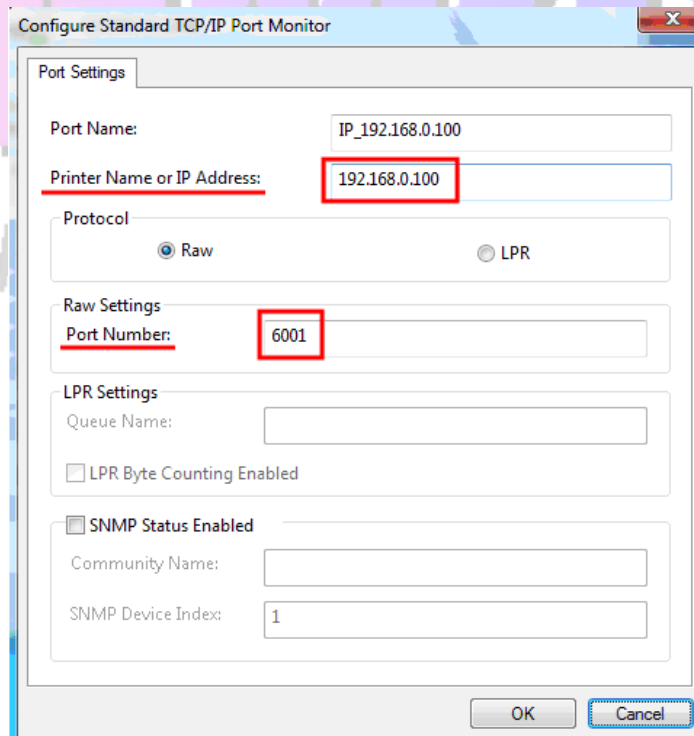
5. Move "Ports" tab.



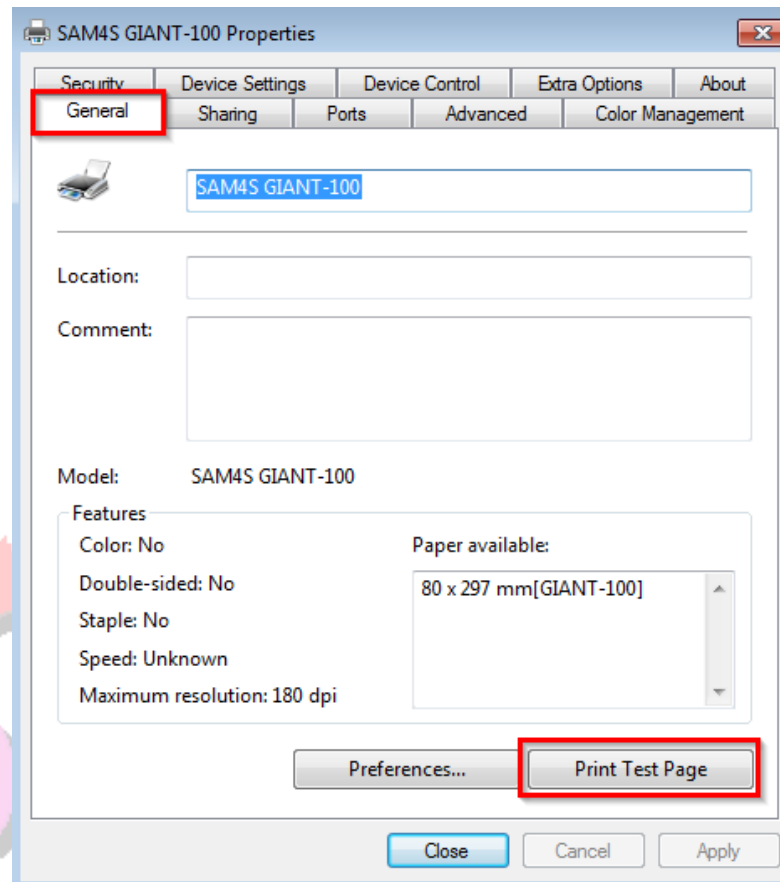
6. Select "Standard TCP/IP Port". Click "Configure Port" button



7. Input a WLAN IP address and Port number.



8. Move "General" tab; click "Print Test Page". If a printer doesn't print any page, check network setting and do ping test.



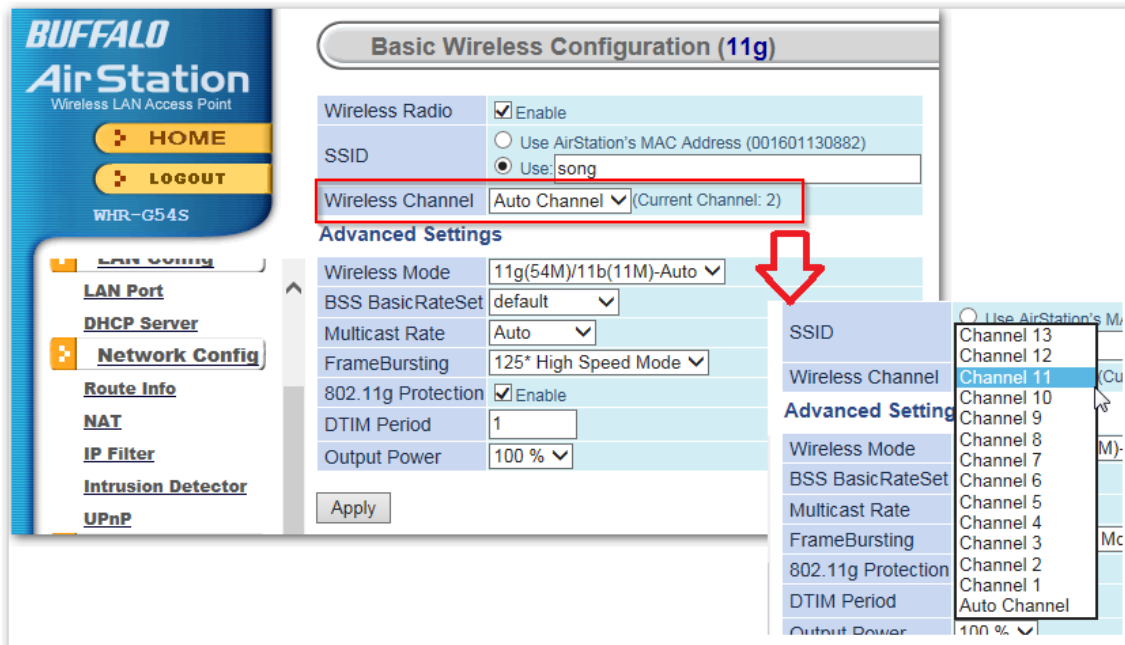
| www.sam4s.com |

## (9) WLAN Tips

The following content is the WLAN tips. Please reference.

**Q :** Printer reaction is too slow, or ping time value is too large.

**A :** Please try to move closer the physical distance to the WLAN interface and AP router. If there is no improvement, Please try to change the current channel of the wireless LAN channel (Wireless Channel) to another channel in the router settings. The following is an example of the router settings.



**Q :** WLAN settings are not saved in Infrastructure mode. The self-test sheet is not display before saved network settings.

**A :** Is encryption method of router that you are trying to connect is WEP? WEP is an older encryption scheme is vulnerable to security. Also, the router operating in abnormal mixed mode, there is a possibility that WLAN configuration is not performed. The recommended encryption method is WPA system. Even as it's inconvenient, please change the router settings to WPA for security.

**Q :** My AP is not detected in Infrastructure mode.

**A :** Please try to move close to the distance of the AP and the printer. Also, please make sure that radio frequency band of the AP is 2.4GHz. WLAN interface, does not support the AP frequency of 5GHz.



## REV 1.2

Revision History	
Rev 1.0	2014/03/02
Rev 1.1	2014/04/25
Rev 1.2	2015/06/18